

"#\$%&'()*+,-./:0123456789@!&*'()&*(!+,-!./#0/)'!123\$*&!

Ma a D La M S

!

Purpose

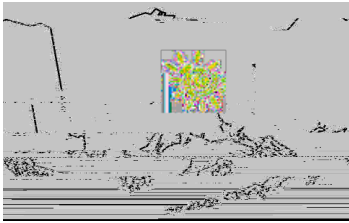
The Tanana District 4-H Leaders Council Scholarship encourages the 4-H community to develop and enhance the 4-H experience of its members, leaders, and community through participation in workshops, conferences, educational opportunities, or events related to their 4-H projects.

Procedures

- 1) Successful applicants must be a current enrolled 4-

"#\$%&'()*+,-./:0123456789@!&*'()&*(!+,-!./#0/)'!123\$*&!
 : 4!+,-!./#0/)'!#)#!/\$*23#;/0!(2!<#)(*<#(/=*)/#(&\$;!2<<2)(3\$&(&'!82)!23)!+,-!*2553\$&(79!
 "\$#\$%&'()*+,-./:0123456789@!&*'()&*(!+,-!./#0/)'!123\$*&!
 #0!/03*#(&2\$#4!2<<2)(3\$&(&'!82)!+,-!723(>!#\$04/#0/)'9!

!



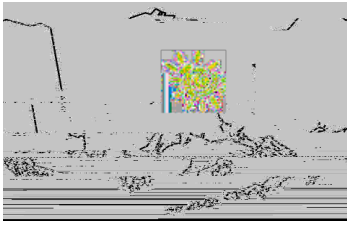
"#\$%&'()*+,-./:0123456789@!&*'()&*(!+, -!. /#0/)'!123\$*!&!

Ma a D La M S

!

!!

#\$%&'()*+,-./:0123456789@!&*'()&*(!+, -!. /#0/)'!123\$*!&*'!&*' /567!28!+, -!. /#0/)'9!
: 4!+, -!. /#0/)'!# /!/\$*23#; /0!(2!<#)(!&*<#(/=!*) /#(&\$; !2<<2)(3\$&(&'!82)!23)!+, -!*2553\$&(&79!!
"#\$%&'()*+,-./:0123456789@!&*'()&*(!+, -!. /#0/)'!123\$*!&*' 3<<2)(' !#\$0!<)252(/' ! 3<<4/5/\$(#44/#0/)'>&<!!
#\$0!/03*#(&2\$#4!2<<2)(3\$&(&'!82)!+, -!723(>!#\$04/#0/)'9!



"#\$%&'()*+,-./:0123456789@!@!@!

Ma a D La M S

!

Applicant's Information

- 1) **Attach your 4-H Resume (not bullet points) to include the following. Show dates involved in each activity and include specific information and details where it will enhance your resume:**
 - a) Years as member or leader (Leaders separate years as youth and as leader)
 - b) Clubs lead (type of leader) or youth include projects and clubs you are involved in
 - c) 4-H Recognition(s) received
 - d) Club or Leader Council offices or committees held
 - e) Educational conferences attended- District, State and National
 - f) District events such as clinics, camps, conferences, fundraising involved in and what role you played (i.e. chair, worker, committee member, etc.) Do not include fundraisers where 4-H youth or leader personally benefits.)
 - g) 4-H Community Service activities
 - h) Other 4-H events such as district classes you have attended or presented at

2) **Why do you want to attend this event? And what specific information or skill do you hope to gain from this event?**

"#\$%&'()*+,-./:0123456789@!@!@!
 : 4!+, -!. /#0/)!#) /!/\$*23#; /0!(2!<#)(*<#(/=!*) /#(&\$; !2<<2)(3\$(&/'!82)!23)!+, -!*2553\$(79!!
 "\$#\$%&'()*+,-./:0123456789@!@!@! 3<<2)('!#\$0!<)252(/'! 3<<4/5/\$(#44/#0/)'>&<!!
 #0!/03*#(82\$#4!2<<2)(3\$(&/'!82)!+, -!723(>!#\$04/#0/)'9!

!

!

"#\$%&'()*+,-

!

"#\$%&'()*+,-